

Item description/product images

**Description****Material:**

Stainless steel 1.4401.

Version:

Bright.

Grip polished.

Note:

Quarter-turn lock with wing grip. Right or left deployment. The lock can be installed pre-assembled.

Water and dust tight according to IP65.

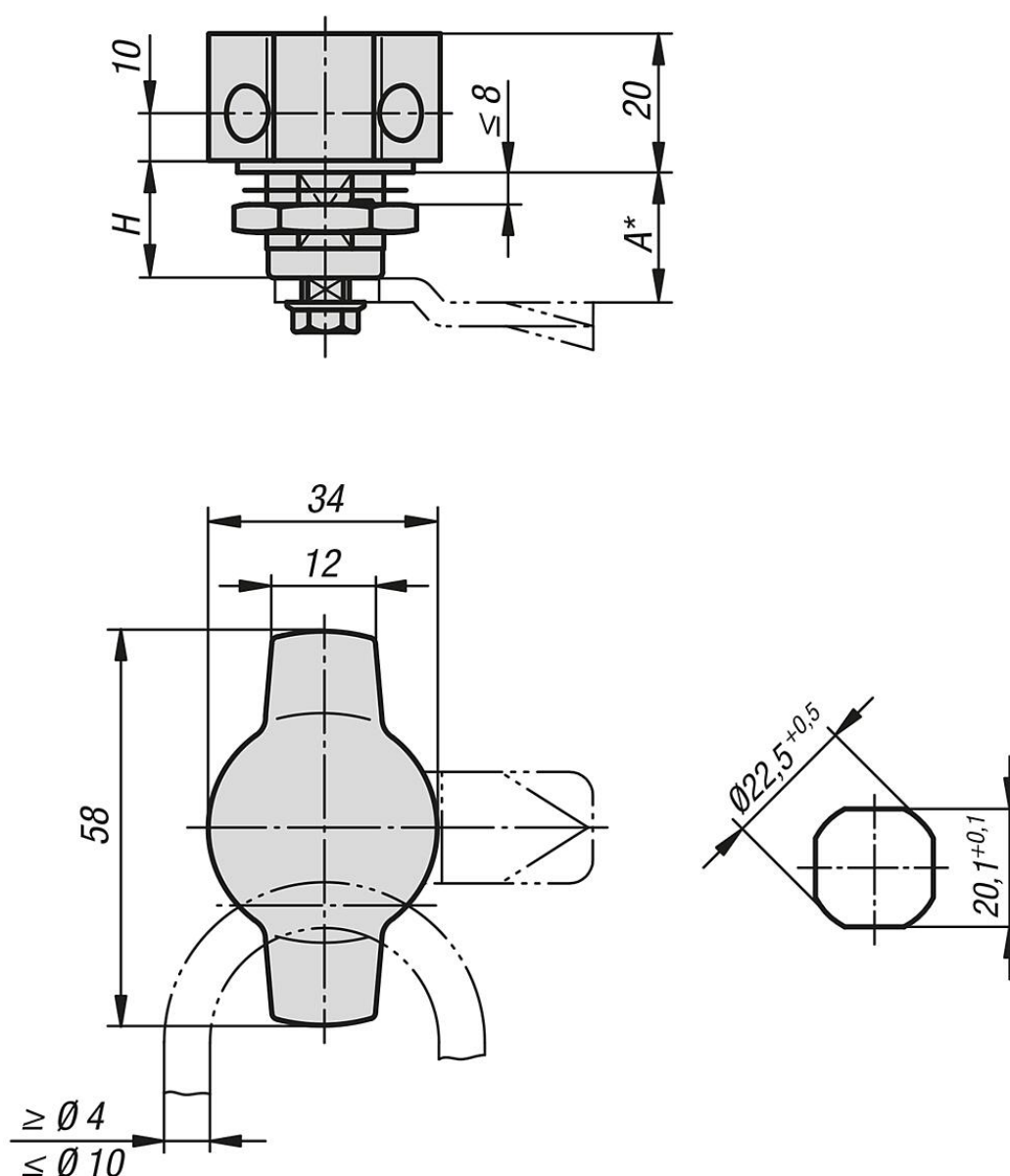
Please order the desired tongue type separately. Every tongue can be combined with every housing.

*Dimension A results from the combination of the quarter turn lock and the tongue and is specified with the matching tongues.

Accessory:

Tongue for stainless steel quarter-turn lock 05566-07.

Drawings



Overview of items

Order No.	Actuation	H
05571-02-18	lockable grip	18