

Item description/product images

**Description****Material:**

Housing and actuator die-cast zinc.

Nut brass.

O-ring NBR, flat seal CR.

Version:

Housing and actuator, trivalent passivated or black powder-coated.

Nut electro zinc-plated.

Note:

This quarter-turn lock is vibration-resistant through a detent mechanism in the end position. Right or left mounting with 90° closing and internal rotation limit. The quarter-turn lock can be installed pre-assembled (limitations by small A-dimensions and thick doors). Tested according to DIN EN 60068-2-64 (vibration) and DIN EN 60068-2-27 (shock), test standard 61373. Vibration-proof as per rail applications category 1, class B requirements (highest requirement).

Water and dust proof as per IP65 through O-ring and flat seal.

Order the required tongue version separately. Every tongue can be combined with every housing.

*Dimension A results from the combination of the quarter turn lock and the tongue and is specified with the matching tongues.

Accessory:

Key 05586.

Tongue for steel compact quarter-turn lock 05563.

Drawing reference:

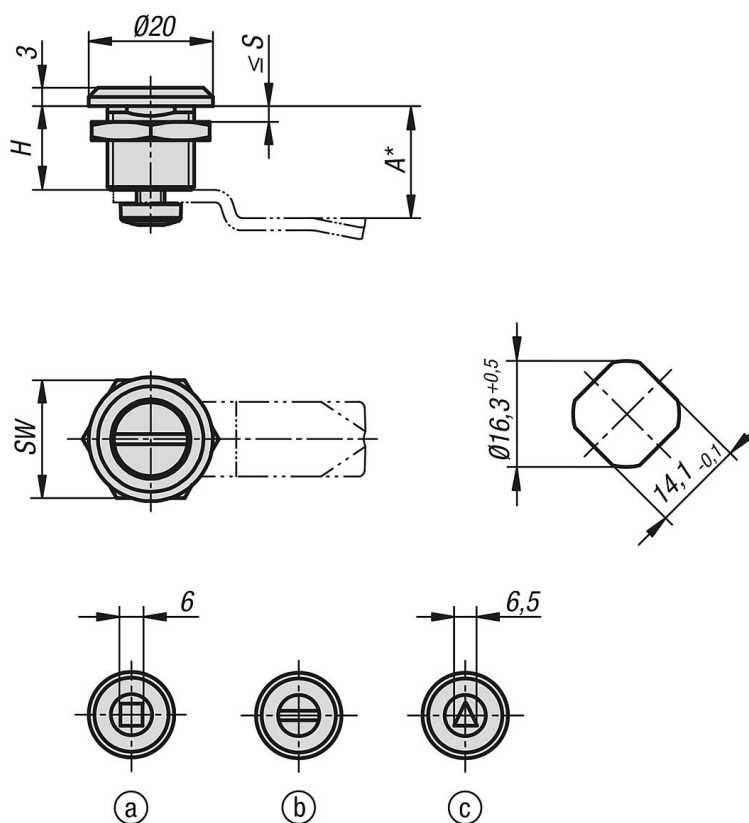
Actuation:

a) square 6 mm

b) slot

c) triangle 6,5 mm

Drawings



Overview of items

Order No.	Main colour	Actuation	H	SW	S max.
05561-16131	silver	square 6 mm	13,5	20	7
05561-20131	silver	slot	13,5	20	7
05561-86131	silver	triangle 6.5 mm	13,5	20	7
05561-16132	black	square 6 mm	13,5	20	7
05561-20132	black	slot	13,5	20	7
05561-86132	black	triangle 6.5 mm	13,5	20	7