

Item description/product images



Description

Material:

Housing glass-bead reinforced polyamide.

Rollers POM.

Screws steel.

Version:

Housing and rollers black.

Screws electro zinc-plated.

Note:

The roller elements are suitable for the manufacture of roller conveyors in any length and width. Suitable for type B and I aluminium profiles. Due to the sprung guide tabs on the bottom, the elements will fit any 8 and 10 slots.

Attachment Form B

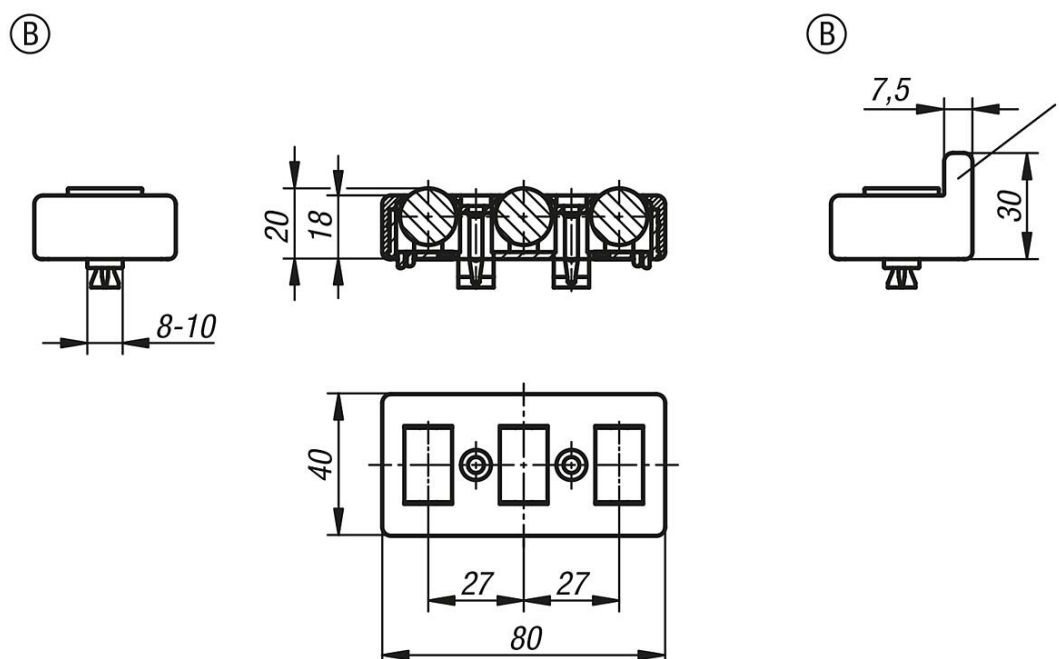
Insert the bottom of the housing and rollers into the slot on the aluminium profile. Bring the top of the housing into position and press down. Knocking in or screwing in the screws fastens and secures the roller element in the slot.

Alternatively, the clamps can be removed from the bottom of the housing and the roller element permanently screwed to the aluminium profile using screws and slot keys.

Drawing reference:

1) lateral guide

Drawings



Overview of items

Order No.	Form	Version 1	Slot width	Load capacity N
10450-2000	B	without lateral guide	8/10	100

Overview of items

Order No.	Form	Version 1	Slot width	Load capacity N
10450-2100	B	with lateral guide	8/10	100