

Item description/product images

**Description****Material:**

Plate die-cast zinc or stainless steel 1.4305.
Damper plate PUR elastomere (Sylomer V12).

Version:

Die-cast zinc plate, black powder-coated.
Stainless steel plate, bright.
Damper plate, grey, glued in, anti-slip.
Temp. range -30 °C to +70 °C.

Note:

The load rating given in the table is a recommendation of the permanent static load up to which the absorption unit should be used. This static load corresponds to a pressure per area of 0.4 N/mm², at which the material achieves its optimum absorption properties. Here it is taken into account that under dynamic demands an additional load, up to 0.6 N/mm² may occur. The damper plate absorbs vibrations and prevents the swivel foot slipping. Swivel feet consist of a plate and a threaded spindle or ball joint. Any plate can be combined with any threaded spindle or ball joint.

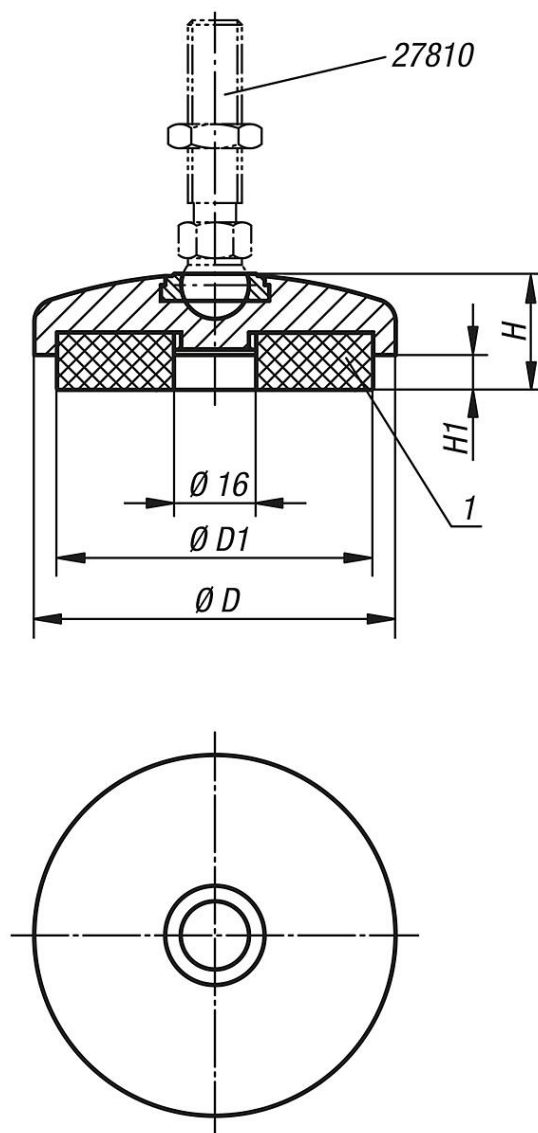
For matching threaded spindles see 27810.

For matching ball joints see 27811.

Drawing reference:

1) damper plate

Drawings



Overview of items

| Order No. | Main material | D | D1 | H | H1 by 0 / 0.4 / 0.6 N/mm ² | Load rating max. kN |
|-------------|-----------------|----|------|----|---|------------------------|
| 27804-20401 | zinc | 40 | 30,5 | 25 | 7 / 5,9 / 4,8 | 0,062 |
| 27804-20501 | zinc | 50 | 40,5 | 25 | 7 / 5,9 / 4,8 | 0,212 |
| 27804-20601 | zinc | 60 | 50 | 25 | 7 / 5,9 / 4,8 | 0,433 |
| 27804-20801 | zinc | 80 | 68 | 25 | 7 / 5,9 / 4,8 | 0,614 |
| 27804-20402 | stainless steel | 40 | 30,5 | 25 | 7 / 5,8 / 4,9 | 0,212 |
| 27804-20502 | stainless steel | 50 | 40,5 | 25 | 7 / 5,8 / 4,9 | 0,435 |
| 27804-20602 | stainless steel | 60 | 50 | 25 | 7 / 5,8 / 4,9 | 0,705 |
| 27804-20802 | stainless steel | 80 | 68 | 25 | 7 / 5,8 / 4,9 | 1,372 |