

Item description/product images



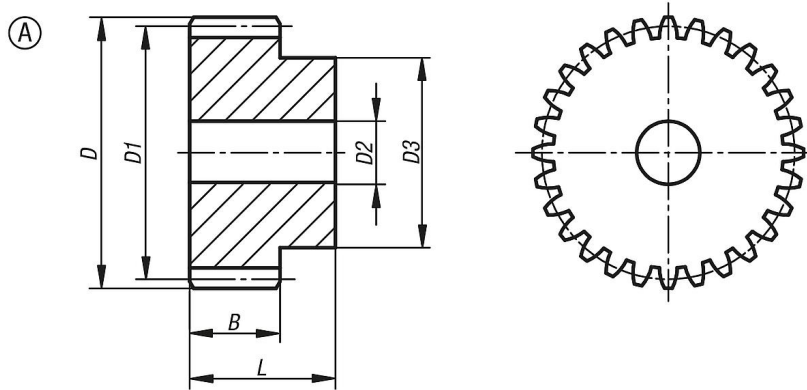
Description

Material:
Steel 1.0503 (C45).

Version:
Milled tooting, straight teeth
Tooting inductively hardened to 50 +4 HRC.
engagement angle 20°, bright.

Note:
Hardening changes the tooting quality to ca. 10-11.
The spur gears have a centre or pilot hole.

Drawings



Overview of items

Order No.	Form	Form definition	Module	No. of teeth	B	D	D1	D2 max.	D3	L
22401-0150500012	A	with hub	5	12	50	70	60	20	45	75
22401-0150500015	A	with hub	5	15	50	85	75	20	60	75
22401-0150500018	A	with hub	5	18	50	100	90	20	70	75
22401-0150500020	A	with hub	5	20	50	110	100	20	80	75
22401-0150500024	A	with hub	5	24	50	130	120	20	90	75
22401-0150500025	A	with hub	5	25	50	135	125	20	90	75
22401-0150500030	A	with hub	5	30	50	160	150	25	110	75