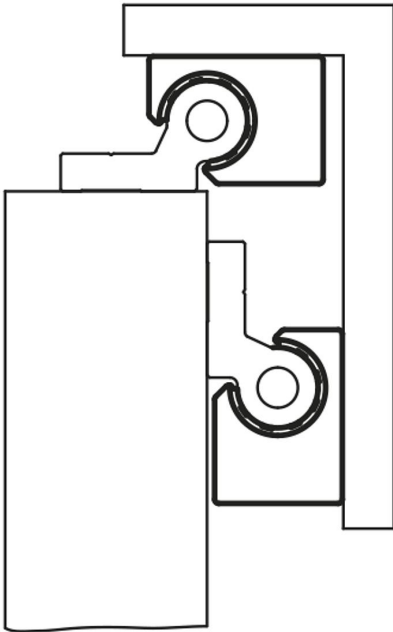


Item description/product images

**Description****Material:**

Aluminium.

Version:

Hard anodised, layer thickness 50 µm.

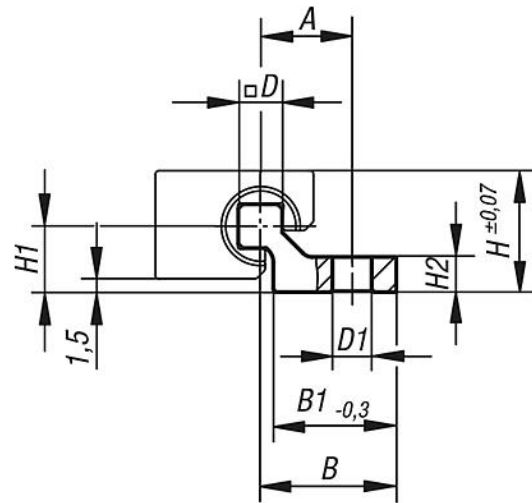
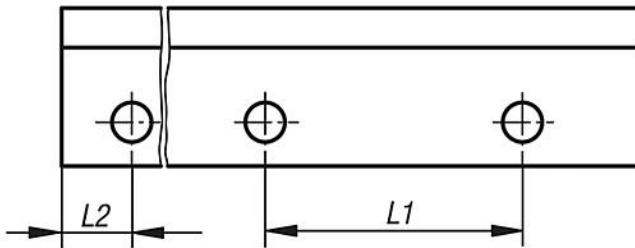
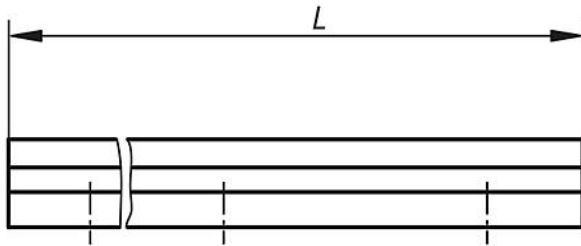
Hardness 500 HV

Note:

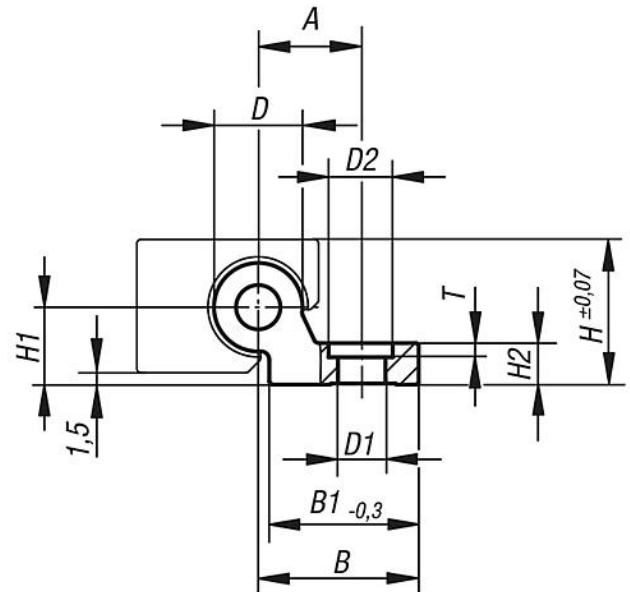
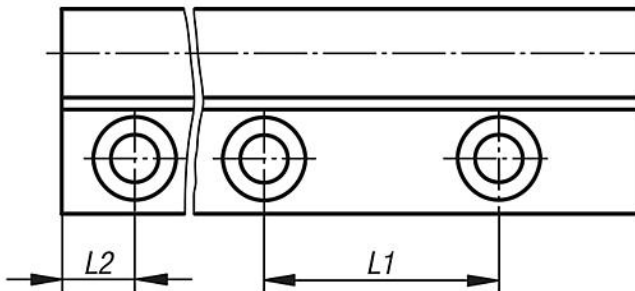
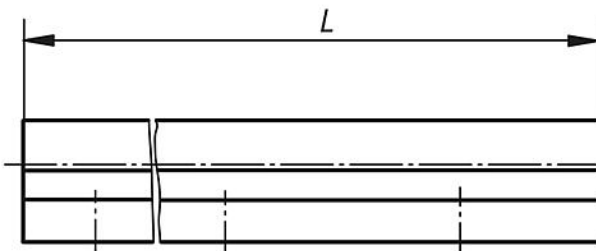
Single guide rails enable highest flexibility during construction and easy assembly. Can be used to compensate for height differences in height. Hard anodised aluminium is used as rail material and ensures best friction and wear results. Robust and dirt resistant for transporting heavy loads safely and maintenance-free.

Drawings

size 06



sizes 10-20



Overview of items

| Order No. | Version | Size | L max. | L2 | A | B | B1 | D | D1 | D2 | H | H1 | H2 | L1 | T |
|------------------|---------|------|--------|----|------|------|----|----|-----|----|----|-----|-----|-----|---|
| 21240-10630X3000 | L max. | 6 | 3000 | 30 | 10,5 | 15,5 | 14 | 5 | 4,5 | - | 14 | 7,5 | 4 | 60 | - |
| 21240-11030X4000 | L max. | 10 | 4000 | 30 | 17 | 27 | 27 | 10 | 6,6 | - | 18 | 9 | 5,5 | 120 | - |
| 21240-11630X4000 | L max. | 16 | 4000 | 30 | 19 | 29 | 27 | 16 | 9 | 15 | 27 | 14 | 7,5 | 120 | 4 |
| 21240-12030X4000 | L max. | 20 | 4000 | 30 | 21 | 31 | 27 | 20 | 9 | 15 | 36 | 20 | 9,5 | 120 | 5 |

Overview of items

| Order No. | Version | Size | L max. | L2 | L2 min. | L2 max. | A | B | B1 | D | D1 | D2 | H | H1 | H2 | L1 | T |
|---------------|----------------------------|------|-----------|----|------------|------------|------|------|----|----|-----|----|----|-----|-----|-----|---|
| 21240-106**X* | L2 and L customer specific | 6 | * | ** | 20 | 49,5 | 10,5 | 15,5 | 14 | 5 | 4,5 | - | 14 | 7,5 | 4 | 60 | - |
| 21240-110**X* | L2 and L customer specific | 10 | * | ** | 20 | 79,5 | 17 | 27 | 27 | 10 | 6,6 | - | 18 | 9 | 5,5 | 120 | - |
| 21240-116**X* | L2 and L customer specific | 16 | * | ** | 20 | 79,5 | 19 | 29 | 27 | 16 | 9 | 15 | 27 | 14 | 7,5 | 120 | 4 |
| 21240-120**X* | L2 and L customer specific | 20 | * | ** | 20 | 79,5 | 21 | 31 | 27 | 20 | 9 | 15 | 36 | 20 | 9,5 | 120 | 5 |