

Item description/product images



Description

Material:

Guide rail tool steel 1.2842.
End pieces 1.0531.

Version:

Guide rails hardened (60-62 HRC) and ground.
End piece black oxidised.

Note:

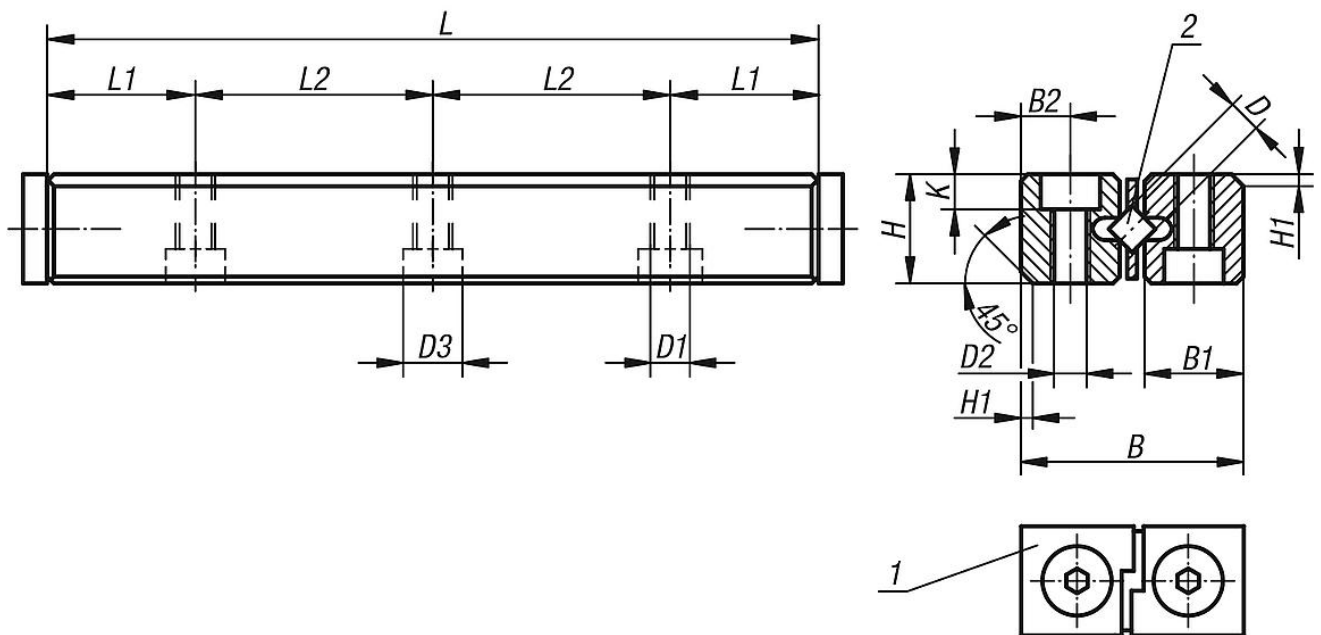
See 21052 for the matching roller cage.
The guide rails are installed in precision slides (21034, 21035, 21038 and 21040).
They can therefore also be used as spare parts.

Supplied as single guide rails without roller cages. Order additional guide rails and roller cages separately

Drawing reference:

- 1) end part
- 2) without roller cage (21052)

Drawings



Overview of items

| Order No. | D | L | L1 | L2 | B | B1 | B2 | H | H1 | K | D1 | D2 | D3 |
|-------------|---|-----|------|------|----|-----|-----|---|----|-----|----|------|-----|
| 21050-02030 | 2 | 30 | 7,5 | 1x15 | 12 | 5,5 | 2,5 | 6 | 1 | 2,2 | M3 | 2,55 | 4,4 |
| 21050-02045 | 2 | 45 | 7,5 | 2x15 | 12 | 5,5 | 2,5 | 6 | 1 | 2,2 | M3 | 2,55 | 4,4 |
| 21050-02060 | 2 | 60 | 7,5 | 3x15 | 12 | 5,5 | 2,5 | 6 | 1 | 2,2 | M3 | 2,55 | 4,4 |
| 21050-03050 | 3 | 50 | 12,5 | 1x25 | 18 | 8,3 | 3,5 | 8 | 1 | 3,2 | M4 | 3,4 | 6 |
| 21050-03075 | 3 | 75 | 12,5 | 2x25 | 18 | 8,3 | 3,5 | 8 | 1 | 3,2 | M4 | 3,4 | 6 |
| 21050-03100 | 3 | 100 | 12,5 | 3x25 | 18 | 8,3 | 3,5 | 8 | 1 | 3,2 | M4 | 3,4 | 6 |
| 21050-03125 | 3 | 125 | 12,5 | 4x25 | 18 | 8,3 | 3,5 | 8 | 1 | 3,2 | M4 | 3,4 | 6 |

Overview of items

| Order No. | D | L | L1 | L2 | B | B1 | B2 | H | H1 | K | D1 | D2 | D3 |
|-------------|---|-----|------|------|----|------|-----|----|-----|-----|----|-----|----|
| 21050-03150 | 3 | 150 | 12,5 | 5x25 | 18 | 8,3 | 3,5 | 8 | 1 | 3,2 | M4 | 3,4 | 6 |
| 21050-06100 | 6 | 100 | 25 | 1x50 | 31 | 13,9 | 6 | 15 | 1,8 | 5,2 | M6 | 5,4 | 10 |
| 21050-06150 | 6 | 150 | 25 | 2x50 | 31 | 13,9 | 6 | 15 | 1,8 | 5,2 | M6 | 5,4 | 10 |
| 21050-06200 | 6 | 200 | 25 | 3x50 | 31 | 13,9 | 6 | 15 | 1,8 | 5,2 | M6 | 5,4 | 10 |
| 21050-06250 | 6 | 250 | 25 | 4x50 | 31 | 13,9 | 6 | 15 | 1,8 | 5,2 | M6 | 5,4 | 10 |
| 21050-06300 | 6 | 300 | 25 | 5x50 | 31 | 13,9 | 6 | 15 | 1,8 | 5,2 | M6 | 5,4 | 10 |
| 21050-06350 | 6 | 350 | 25 | 6x50 | 31 | 13,9 | 6 | 15 | 1,8 | 5,2 | M6 | 5,4 | 10 |