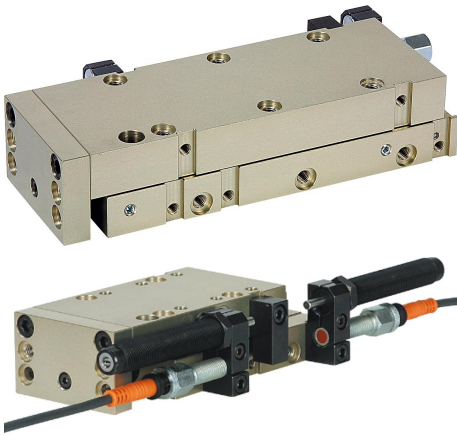


Item description/product images

**Description****Material:**

Housing high-strength aluminium.
Stop system steel.

Version:

Housing anodised.
Stop system hardened and black oxidised.

Note:

Maintenance-free pneumatic linear modules with recirculating ball bearing guide and load capacity of max. 240 N. Control by 4/2 or 5/2 directional valve. pneumatic drive, 4-8 bar, constant, filtered (10 µm), dried, oiled or unoled. Compressed air connection M5.

Modules of the same size can be combined with one another without adapter plates via the precise centring system by means of centring rings 20240.

The position of the stop system is variable.

Repeat accuracy ± 0.01 mm.

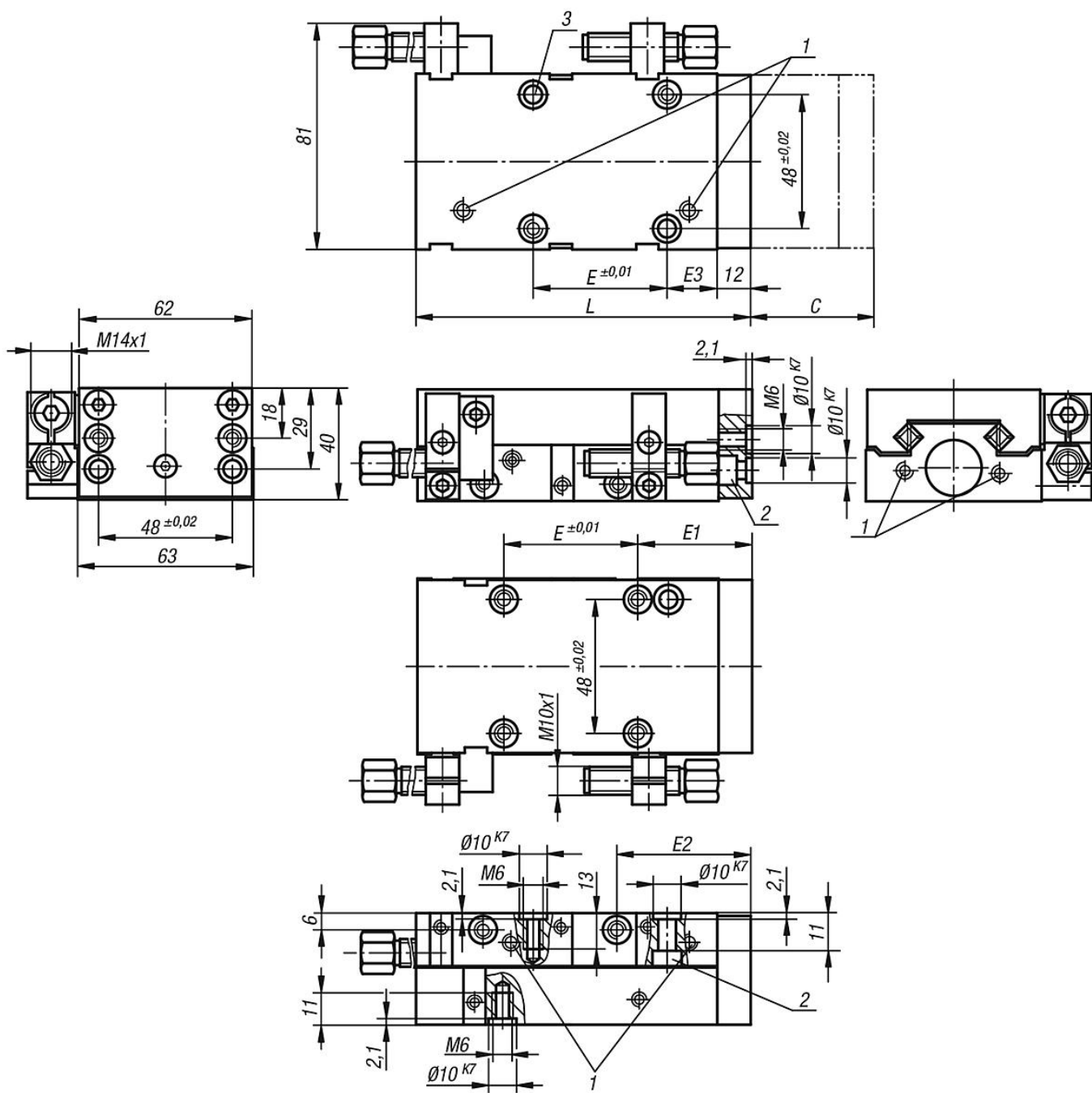
Accessory:

See table for shock absorbers, proximity switches and plug connectors.

Drawing reference:

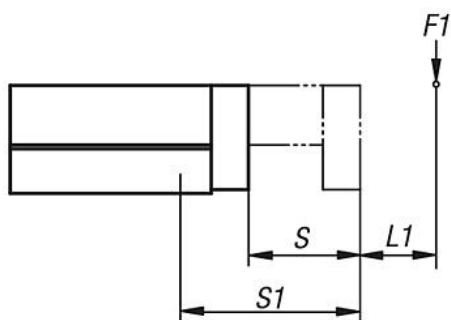
- 1) compressed air connections
- 2) counterbore for socket head screw ISO 4762-M6
- 3) screw cannot be installed by 30/75/125/175 travel

Drawings

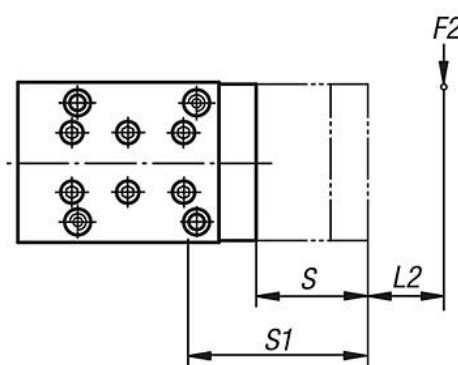


Drawings

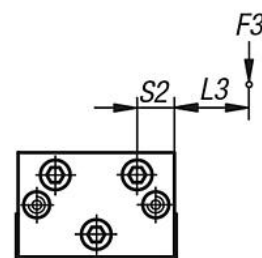
Load data



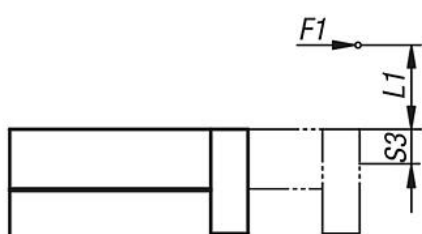
$$M1 = (S1 + L1) \times F1$$



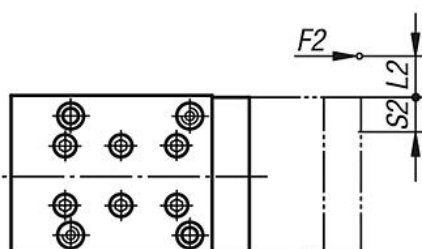
$$M2 = (S1 + L2) \times F2$$



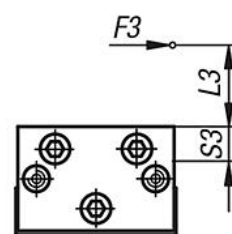
$$M3 = (S2 + L3) \times F3$$



$$M1 = (S3 + L1) \times F1$$



$$M2 = (S2 + L2) \times F2$$



$$M3 = (S3 + L3) \times F3$$

$$\frac{M1_{eff}}{M1_{zul}} + \frac{M2_{eff}}{M2_{zul}} + \frac{M3_{eff}}{M3_{zul}} \leq 1$$

Calculating the lifespan:

$$L = \left(\frac{M_{zul}}{M_{eff}} \right)^3 \times 10^5$$

L = lifespan (m)

M_{zul} = permissible torque (Nm)

M_{eff} = calculated torque (Nm)

Overview of items

| Order No. | Size | E | E1 | E2 | E3 | L | Travel S | Load capacity N | Piston force at 6 bar (N) | Retraction force at 6 bars (N) | Cylinder Ø | Air consumption per cycle at 6 bar (ccm) |
|------------|------|--------|----|----|----|-----|----------|-----------------|---------------------------|--------------------------------|------------|--|
| 20036-6030 | 6 | 1 x 48 | 29 | 36 | 18 | 121 | 30 | 240 | 76 | 66 | 16 | 11,2 |
| 20036-6050 | 6 | 1 x 48 | 29 | 36 | 18 | 121 | 50 | 220 | 76 | 66 | 16 | 18,7 |
| 20036-6075 | 6 | 2 x 48 | 35 | 42 | 21 | 175 | 75 | 200 | 76 | 66 | 16 | 28 |

Overview of items

| Order No. | Size | E | E1 | E2 | E3 | L | Travel S | Load capacity N | Piston force at 6 bar (N) | Retraction force at 6 bars (N) | Cylinder Ø | Air consumption per cycle at 6 bar (ccm) |
|------------|------|--------|----|----|----|-----|----------|-----------------|---------------------------|--------------------------------|------------|--|
| 20036-6100 | 6 | 2 x 48 | 35 | 42 | 21 | 175 | 100 | 180 | 76 | 66 | 16 | 37,4 |
| 20036-6125 | 6 | 3 x 48 | 17 | 45 | 27 | 231 | 125 | 160 | 76 | 66 | 16 | 46,8 |
| 20036-6150 | 6 | 3 x 48 | 17 | 45 | 27 | 231 | 150 | 140 | 76 | 66 | 16 | 56,1 |
| 20036-6175 | 6 | 4 x 48 | 26 | 52 | 34 | 288 | 175 | 120 | 76 | 66 | 16 | 65,5 |
| 20036-6200 | 6 | 4 x 48 | 26 | 52 | 34 | 288 | 200 | 100 | 76 | 66 | 16 | 74,8 |

| Order No. | Size | M1 Nm | M2 Nm | M3 Nm | S1 | S2 | S3 |
|------------|------|-------|-------|-------|--------------------|----|----|
| 20036-6030 | 6 | 33,2 | 33,2 | 44,6 | 45 + S/2 (travel) | 14 | 16 |
| 20036-6050 | 6 | 33,2 | 33,2 | 44,6 | 45 + S/2 (travel) | 14 | 16 |
| 20036-6075 | 6 | 38,7 | 38,7 | 59,5 | 70 + S/2 (travel) | 14 | 16 |
| 20036-6100 | 6 | 38,7 | 38,7 | 59,5 | 70 + S/2 (travel) | 14 | 16 |
| 20036-6125 | 6 | 44,2 | 44,2 | 59,5 | 95 + S/2 (travel) | 14 | 16 |
| 20036-6150 | 6 | 44,2 | 44,2 | 59,5 | 95 + S/2 (travel) | 14 | 16 |
| 20036-6175 | 6 | 49,7 | 49,7 | 74,4 | 120 + S/2 (travel) | 14 | 16 |
| 20036-6200 | 6 | 49,7 | 49,7 | 74,4 | 120 + S/2 (travel) | 14 | 16 |