



## Description

### Material:

Slides steel.  
Ball cages steel.  
Balls, steel.

### Version:

Slides electro zinc-plated.  
Ball cages, electro zinc-plated.  
Balls hardened.

### Note for ordering:

Sold in pairs.

### Note:

On telescopic slides with partial extension, the travel is less than the installed length. Latches in closed position. When the release lever is actuated, the drawer can be taken out easily and separated from the guide. The dynamic load capacity of the telescopic slides indicates the maximum load rating of a vertically mounted slide pair when the entire extension length is used. The load-bearing capacities specified refer to the maximum value at 10,000 or 80,000 cycles.

Not suitable for horizontal mounting.

The head height of the fastening screws should not exceed 2.5 mm otherwise there is a risk of collision with other parts of the slide.

Form B:

Additionally with latching in open position.

### Advantages:

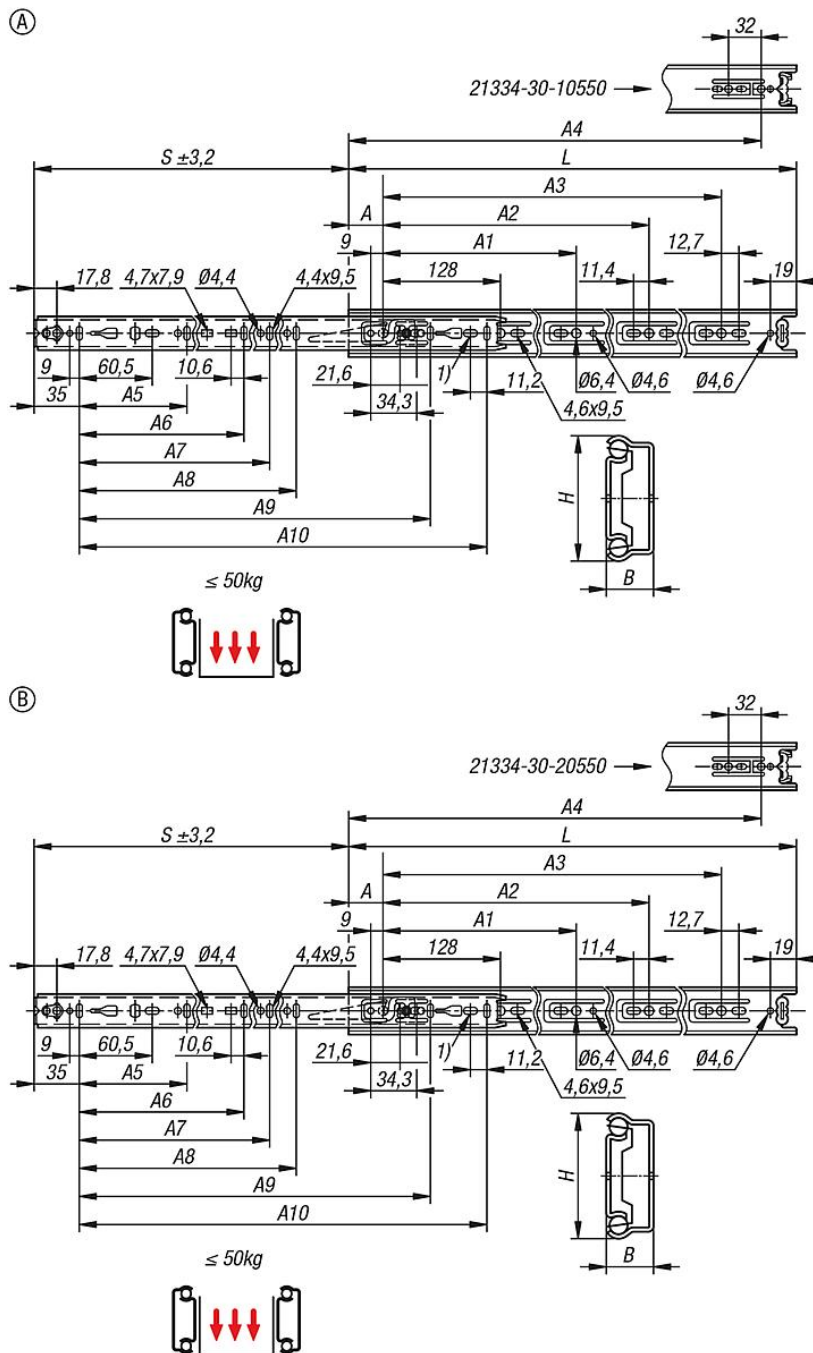
Latches in open and closed positions  
Quick frontal release  
Light running

### Accessory:

Steel mounting bracket for telescopic slides 21335-80

### Drawing reference:

1) Mounting hole by 21334-30-10250 and 21334-30-20250 not provided



## Overview of items

Order No.	Manufacturers article number	Form	Form definition	Assembly	Product type	Load capacity per pair (80,000 cycles) kg	Loading pair (10,000 cycles) kg	Packaging type
21334-30-10250	DZ2132-0025	A	latches in closed position	side mounting	standard	35	50	1 piece = 1 pair
21334-30-10300	DZ2132-0030	A	latches in closed position	side mounting	standard	35	50	1 piece = 1 pair
21334-30-10350	DZ2132-0035	A	latches in closed position	side mounting	standard	35	50	1 piece = 1 pair
21334-30-10400	DZ2132-0040	A	latches in closed position	side mounting	standard	35	50	1 piece = 1 pair
21334-30-10450	DZ2132-0045	A	latches in closed position	side mounting	standard	35	48	1 piece = 1 pair
21334-30-10500	DZ2132-0050	A	latches in closed position	side mounting	standard	34	45	1 piece = 1 pair
21334-30-10550	DZ2132-0055	A	latches in closed position	side mounting	standard	33	42	1 piece = 1 pair
21334-30-10600	DZ2132-0060	A	latches in closed position	side mounting	standard	32	40	1 piece = 1 pair
21334-30-10650	DZ2132-0065	A	latches in closed position	side mounting	standard	31	37	1 piece = 1 pair
21334-30-10700	DZ2132-0070	A	latches in closed position	side mounting	standard	30	35	1 piece = 1 pair
21334-30-20250	DZ2132-0025D0	B	latches in closed and open positions	side mounting	standard	35	50	1 piece = 1 pair

# 21334-30 Telescopic slides, steel for side mounting, partial extension, load capacity up to 50 kg



## Overview of items

Order No.	Manufacturers article number	Form	Form definition	Assembly	Product type	Load capacity per pair (80,000 cycles) kg	Loading pair (10,000 cycles) kg	Packaging type
21334-30-20300	DZ2132-0030D0	B	latches in closed and open positions	side mounting	standard	35	50	1 piece = 1 pair
21334-30-20350	DZ2132-0035D0	B	latches in closed and open positions	side mounting	standard	35	50	1 piece = 1 pair
21334-30-20400	DZ2132-0040D0	B	latches in closed and open positions	side mounting	standard	35	50	1 piece = 1 pair
21334-30-20450	DZ2132-0045D0	B	latches in closed and open positions	side mounting	standard	35	48	1 piece = 1 pair
21334-30-20500	DZ2132-0050D0	B	latches in closed and open positions	side mounting	standard	34	45	1 piece = 1 pair
21334-30-20550	DZ2132-0055D0	B	latches in closed and open positions	side mounting	standard	33	42	1 piece = 1 pair
21334-30-20600	DZ2132-0060D0	B	latches in closed and open positions	side mounting	standard	32	40	1 piece = 1 pair
21334-30-20650	DZ2132-0065D0	B	latches in closed and open positions	side mounting	standard	31	37	1 piece = 1 pair
21334-30-20700	DZ2132-0070D0	B	latches in closed and open positions	side mounting	standard	30	35	1 piece = 1 pair

Order No.	A	A1	A2	A3	A4	A5	A6	A7	A8	A9	A10	B	H	Travel S	L
21334-30-10250	35	-	-	-	-	96	-	-	-	-	192	12,7	35	163	250
21334-30-10300	35	224	-	-	-	96	-	-	-	-	242	12,7	35	205	300
21334-30-10350	35	224	-	-	-	128	-	-	-	-	292	12,7	35	260	350
21334-30-10400	35	224	-	320	-	128	-	-	-	-	342	12,7	35	281	400
21334-30-10450	35	224	-	352	-	128	224	-	-	-	392	12,7	35	331	450
21334-30-10500	35	224	-	416	-	128	224	-	-	-	442	12,7	35	376	500
21334-30-10550	35	224	352	-	480	128	224	320	-	-	492	12,7	35	415	550
21334-30-10600	35	224	352	480	-	128	224	320	-	-	542	12,7	35	451	600
21334-30-10650	35	224	352	544	-	128	224	320	416	544	592	12,7	35	488	650
21334-30-10700	35	224	352	544	-	128	224	288	416	-	642	12,7	35	526	700
21334-30-20250	35	-	-	-	-	96	-	-	-	-	192	12,7	35	163	250
21334-30-20300	35	224	-	-	-	96	-	-	-	-	242	12,7	35	205	300
21334-30-20350	35	224	-	-	-	128	-	-	-	-	292	12,7	35	260	350
21334-30-20400	35	224	-	320	-	128	-	-	-	-	342	12,7	35	281	400
21334-30-20450	35	224	-	352	-	128	224	-	-	-	392	12,7	35	331	450
21334-30-20500	35	224	-	416	-	128	224	-	-	-	442	12,7	35	376	500
21334-30-20550	35	224	352	-	480	128	224	320	-	-	492	12,7	35	415	550
21334-30-20600	35	224	352	480	-	128	224	320	-	-	542	12,7	35	451	600
21334-30-20650	35	224	352	544	-	128	224	320	416	544	592	12,7	35	488	650
21334-30-20700	35	224	352	544	-	128	224	288	416	-	642	12,7	35	526	700