

## Item description/product images

**Description****Material:**

Polyamide PA6.

**Version:**

black.

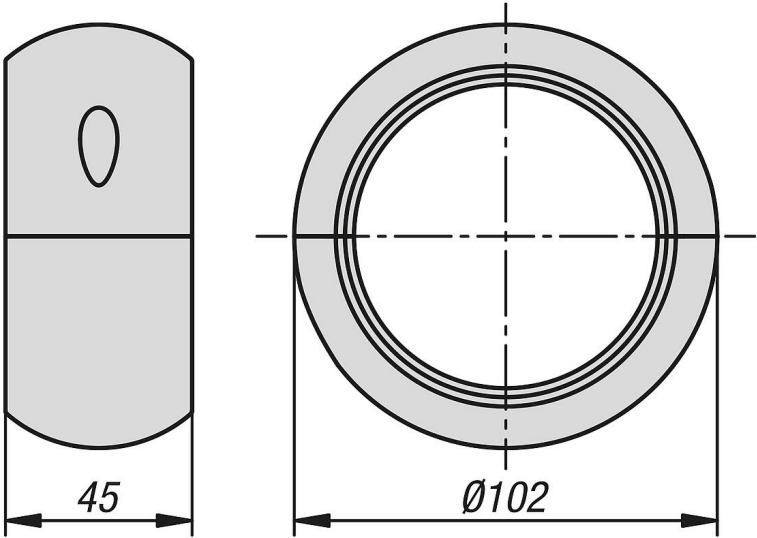
**Note:**

Protectors for additional protection for energy chains. Protects the energy chain from impacts, sharp edges and abrasion. Can be mounted at any point along the energy chain. The protector consists of two half shells. These are simply slipped over the energy chain and screwed together with M5x12 hexagon socket head cap screws. The protector can still rotate on the energy chain.

**Temperature range:**

-45 °C to +105 °C (briefly up to +150 °C).

Drawings



Overview of items

Order No.	Nominal size
80855-15-0701	70