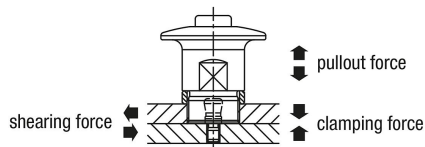


Item description/product images



Description

Product description:

Push button latches are used for replacing and locking fixtures or hatches quickly and easily.

Toolless clamping shortens setup times.

Material:

Housing and push button stainless steel.

Version:

Housing and push button bright.

Note:

Form A for plate thickness 3 to 10 mm.

Form B for plate thickness 3 to 27 mm.

A gap of more than 0.1 mm appears between the plates if the retaining force is exceeded.

Type of operation:

Press the latch over the clamping pin without pressing the knob. The latch is now locked.

To release, press the button and pull the latch off.

Application:

Mounting option A in combination with spacer rings, for plate thickness 3 to 10 mm.

Mounting option B for plate thickness 10 to 27 mm.

Attention:

The specified pull-out forces apply only in combination with clamping pin 03192-25.

Accessory:

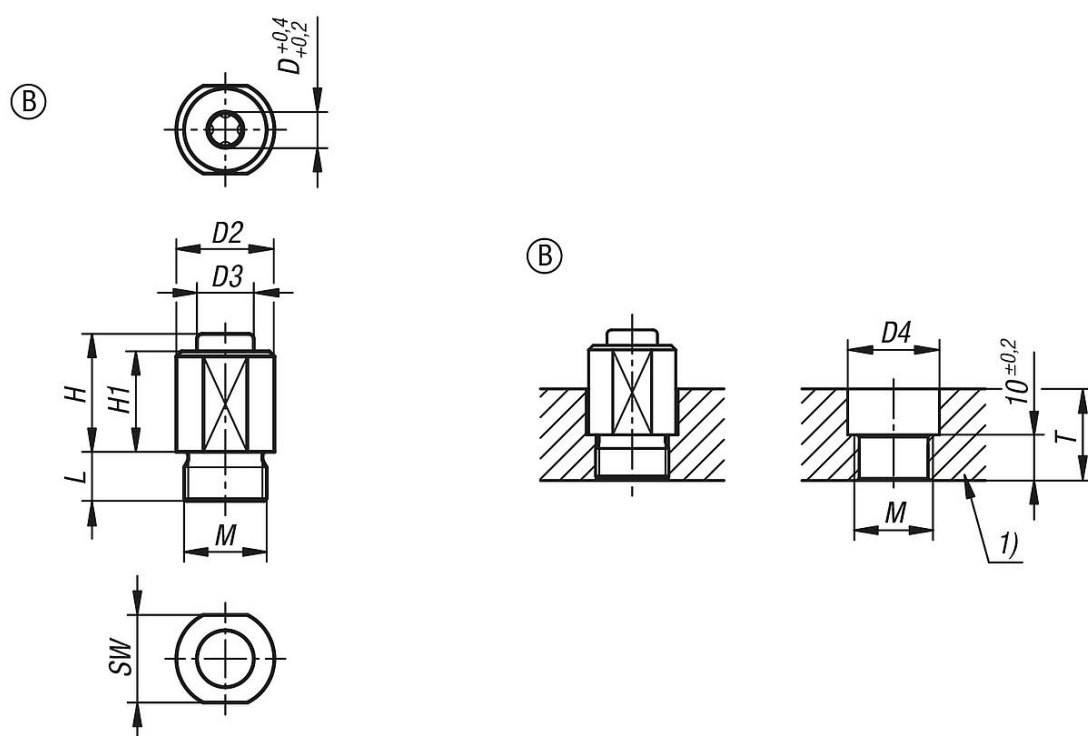
Spacer rings 03192-20.

Clamping pins 03192-25.

Drawing reference:

1) plate

Drawings



Overview of items

| Order No. | Form | Version 1 | D | D2 | D3 | D4 | H | H1 | L | M | SW | T | Holding force N | Clamping force N | Shearing force kN | Pullout force F kN | Temperature resistance |
|-------------|------|--------------|---|----|----|----|----|------|-----|-------|----|-------|-----------------|------------------|-------------------|--------------------|------------------------|
| 03192-15-12 | B | without head | 6 | 19 | 11 | 20 | 23 | 19,5 | 9,5 | M16X1 | 17 | 10-27 | 100 | 6 | 1,1 | 0,25 | ≤180 °C |