

Item description/product images



Description

Material:

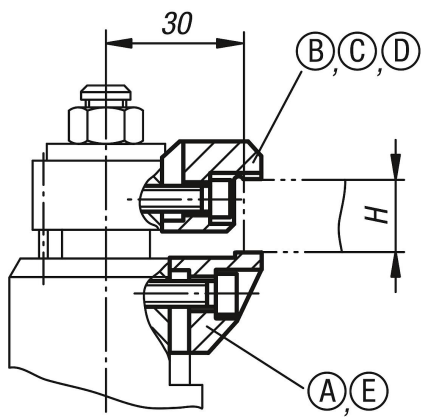
Steel.

Version:

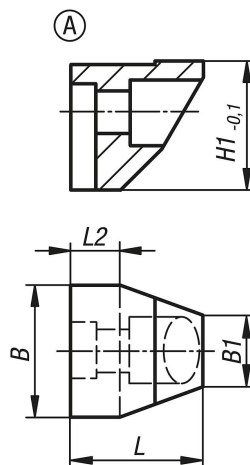
Nitrided and black oxidised.

Note:

The clamping jaws can be used for floating clamps to increase the clamping range.



Drawings



Drawings

Order No.	H = clamping range max. in combination with 04422-90000 [mm]	H = clamping range max. in combination with 04422-910000 [mm]
04422-90416	4-16	-
04422-91527	15-27	-
04422-92638	26-38	-
04422-90029	29	23
04422-90040	40	34

Overview of items

Order No.	Form	Version 1	B	B1	H1	L	L2
04422-90000	A	standard lower jaw	28	15	26,8	28	10